

全国免费服务热线
Toll free national hotline

400-9903-678

上下有限，服务无限
SPACE IS LIMITED, UNLIMITED SERVICE

格尔森电梯有限公司
GERSON ELEVATOR CO.,LTD

地址：浙江省湖州市南浔区南浔镇兴园路355号
Add: No.355 Xingyuan Road, Nanxun Town, Huzhou City, Zhejiang Province,China.
电话(Tel)：0572-2900712
传真(Fax)：0572-2923993
网址(Web)：www.gersonlift.com

中国平安 格尔森电梯产品由中国平安财产保险股份有限公司承保
PINGAN 24小时报案热线：95511

本书为一般信息类出版物，我们保留随时更改产品设计和说明的权利。
本书的任何字句，无论其字面意思或含义，对于任何产品及产品的用途和质量，或者任何购销合同条款的表述与更改均不承担任何责任。
由于印刷工艺的限制，实际加工的颜色可能与本册略有不同之处，最终造型可根据实际材料和色样决定。
It is an ordinary information publication. We keep the right of alter the product design and description at any time.
If there is any dispute out of the literal meaning of any product description, use or quality; the description and alteration of any sales contract, our company will not bear any responsibilities there-from.
Because of the restriction of the printing technology if there is any slight difference between the actually machining color and that from this pamphlet, please take the actual material and color sample as the criterion.

GES ELEVATOR



GERSON ELEVATOR CO.,LTD
格尔森电梯有限公司

自动扶梯/自动人行道 
ESCALATOR / MOVING WALK

国际格尔森 创新引领者

INTERNATIONAL GERSON INNOVATIVE FORERUNNER

德国·索伦堡公司进入中国，在中国浙江南浔合资成立了格尔森电梯有限公司，并设立亚太总部和研发中心，成为一家集研发、设计、制造、销售、安装、维护为一体的专业化综合性电梯制造企业。

公司产品涵盖小（无）机房乘客电梯、观光电梯、医用电梯、别墅电梯、载货电梯、无机房载货电梯、汽车电梯、杂物电梯、自动扶梯、自动人行道等系列产品。

“追求卓越科技、为客户打造至美电梯乘坐空间”是格尔森电梯素来坚持的价值理念，融德国先进的控制技术于电梯系统内、依托优秀的研发团队、在技术上不断突破，实现了技术转移和整机品质提升，本着“用心选材、精心制造、以人为本、科学管理、注重研发、严把质量”关的总体思路下，以行动落实用户权益，为全球客户量身定制专属产品，最大程度满足的多样化需求。

Suolun burg gmbh entered into China, and established GERSON Elevator Co.,ltd. in nanxun Zhejiang China. Asian-Pacific headquarter and research and development center set.

Company's products cover a small (not) machine room passenger elevator, sightseeing elevator, medical elevator, villa elevator, cargo elevator, machine roomless freight elevator, car elevator, sundries elevators, escalators, automatic sidewalks, etc. Series of prouducts.

"Pursuit of excellence in science and technology, and build for the customer to the GERSON elevator ride space" is the elevator always adhere to the value of philosophy, Germany advanced control technology in the elevator system, relying on excellent research and development team, constantly breakthroughs in technology, for technology transfer and overall quality, in line with "carefully select material, elaborate manufacture, people-oriented, sientific management, pay attention to research and development, strict quality" have closed, under the general idea of action to carry out the rights and interests of users, tailord exclusive products for global customers, maximize meet the diverse needs of customers.



格尔森电梯 精品制造专家

GERSON ELEVATOR Manufacture specialist of superior elevators & escalators

 中德合资·德国索伦堡公司
China-germany A joint venture·suolun burg gmbh

中方：格尔森电梯有限公司
德方：德国Suolun Burg Gmbh公司

格尔森电梯有限公司与德国·索伦堡公司合资共同创立的高端电梯品牌。公司依托合资优势，引进德国丰富的管理经验及先进的生产理念，共同研发、制造具有德国工业品质的电、扶梯产品，为城市的垂直交通缔造完美客流解决方案。格尔森电梯一直专注于电梯设备与产品的开发与制造，为电梯产业提供配套产品，帮助客户实现价值最大化。公司推行智能化、人性化、工业化及高新技术化，让格尔森电梯成为行业内备受客户信赖、员工骄傲、社会认可和合作伙伴尊重的一家德系电梯品牌公司。

GERSON is a high-end elevator brand jointly established by Gerson Elevator Co.,LTD and Germany. Solenburg co.

With the advantages in the joint venture company, the introduction of Germany rich management experience and advanced production concept, common research and development,manufacture with German industrial electricity, escalator products, make perfect for urban vertical transportation passenger flow solutions.

GERSON elevator has been focused on the development and manufacture of elevator equipment and products, providing supporting products for the elevator industry to help customers realize the maximization of value. The company pursues intelligent, humane, industrialized and high-tech, so that the GERSON elevator invator industry has become a customer trust, employee pride, social recognition and partner respect of a German elevator Brand Company.



德系风范·奢享生活
German style · Enjoy life

自动扶梯 Escalator



简约流畅，典雅高贵 Smooth & Concise, Noble & Elegant

格尔森自动扶梯以性能优良、实用、灵活的设计满足不同客户的需求。微机变频技术(VVVF)和人机工程学研究成果以及先进制造技术的优先运用，使格尔森自动扶梯更趋完美、安全、舒适、节能、维修方便。

自动扶梯广泛应用于商场、超市、地铁、机场等客流量大的场所。格尔森自动扶梯具备结构精巧、梯路优良、带路精致、外观造型精美、充满现代气息等特点。

GERSON escalators satisfy the requirements from different clients by superior properties, practical and flexible design. It executes optimized application to micro-computer variable frequency technology (VVVF), ergonomics research fruits, advanced manufacture technology. It brings about the more secure, perfect, comfortable, energy-saving GERSON escalators with convenient repair.

GERSON escalators are widely applicable for large passenger flow areas such as shopping center, supermarket, subway, airport etc. It features as fine and exquisite structure, superior stairs, delicate belt, attractive outline model etc. It is rich in modern sense.



结构紧凑 Compact structure

采用高强度的金属结构，使产品的外形尺寸更加紧凑。
It applies high strength metal structure with the more compact outline dimension.

外形美观 Beautiful appearance

超意识的美学设计，符合人体机能的工艺设计、紧跟世界潮流，使其与建筑物、周围环境和谐地融为一体。
Super-consciousness aesthetics design accords with technological design of human-body functions. It is close to the global trend. It harmoniously combines with the buildings and surroundings.

使用寿命长 Long use life

采用质量轻、强度高的金属桁架，保证产品整体刚性；自动润滑系统，可保证产品及时自动的为部件加油，提高产品的使用寿命。

It applies light weight and high strength metal truss. It ensures overall product rigidity and automatic lubricating system. It guarantees that the products can promptly and automatically refuel the parts. It thus enhances the products' service life.

舒适性好 Fine coziness

采用先进的控制系统及减速器，优质的驱动链条和精密的安装工艺，保证产品的运行舒适性。
It applies advanced control system and decelerator, superior drive chain and precision installation craft & technology. It ensures the comfortable operation.

自动人行道

Moving Walk



宁静致远，精美流畅

Still waters run deep, Fine smooth & exquisite

在缤纷的现代都市、大型超市、公共建筑物里、机场、展览中心及运输转换站等公共交通运输场合，自动人行道因其产品自身的特点，不仅能满足人流量巨大的运输问题，也能满足长距离步行和运送行李车、婴儿车、购物车、残疾车等，使人们在乘坐的时候特别是在购物之际上楼下楼有如履平地的感觉，极大的方便了人们的出行和购物。其方便、快捷、愉悦的乘坐需要，由此也成为各大超市、机场、展览中心及运输转换站的首选解决方案。

格尔森自动人行道外形豪华气派，极具时尚美感，能和大都市现代建筑和室内装饰和谐融合，完美地诠释了格尔森技术先进、安全可靠、省点节能、平稳舒适的设计理念。

In the public traffic & transport occasions such as large supermarket, public building, airport, exhibition center, transport changeover station etc. in colorful modern cities, moving walk can solve difficult transport problems, meet the requirements of long-distance walk; delivery of luggage cart; baby's cart; shopping cart; vehicle for disabled etc. because of its own characteristics. People feel as easily as walking on firm earth especially during up / down shopping. It is greatly convenient for people to go out and do shopping. It thus becomes first-choice solution plan for various big supermarkets, airport, exhibition center, transport change-over station etc. because of its prompt, pleasant and convenient travel requirements.

GERSON moving walk is deluxe and imposing in outline. It is rich in popular aesthetics. It harmoniously combines with modern metropolis building and indoor decoration. It perfectly deducts the design concept of advanced GERSON technology, safe & reliable, power & energy saving, smooth & comfortable.



结构紧凑

Compact structure

鱼腹梁式短踏板大大缩小了空间跨度，使整机结构更为紧凑，可灵活适应建筑格局，为客户节省宝贵的建筑空间。

Fish-belly beam type short tread greatly reduces the space span. It brings about the more compact overall structure. It can flexibly suit various building layouts. It saves the precious building space for broad customers.

缤纷多彩的装饰效果

Colorful decoration

扶手带款式多样，可满足不同环境的个性化需求。冲压花纹式前沿板，美观大方，更具立体感。

Diverse styles of handrail can satisfy individual requirements in different environments. Repousse type frontline panel appears elegant and attractive. It is rich in 3D sense.

无可比拟的经济性

Incomparably low cost

自动人行道充分运用先进的制造工艺，大大提高了产品的性能，延长了整机的使用周期，直接的效应就是减少了客户的营运成本。

Moving walk gives a full play of the advanced manufacture craft & technology. It greatly increases the product properties. It prolongs the machines' service cycle. Its direct effect is to reduce the clients' operation cost.

安全可靠

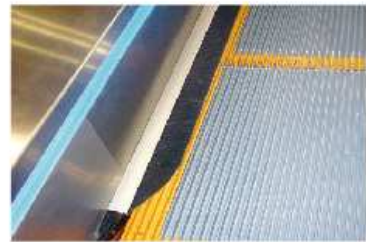
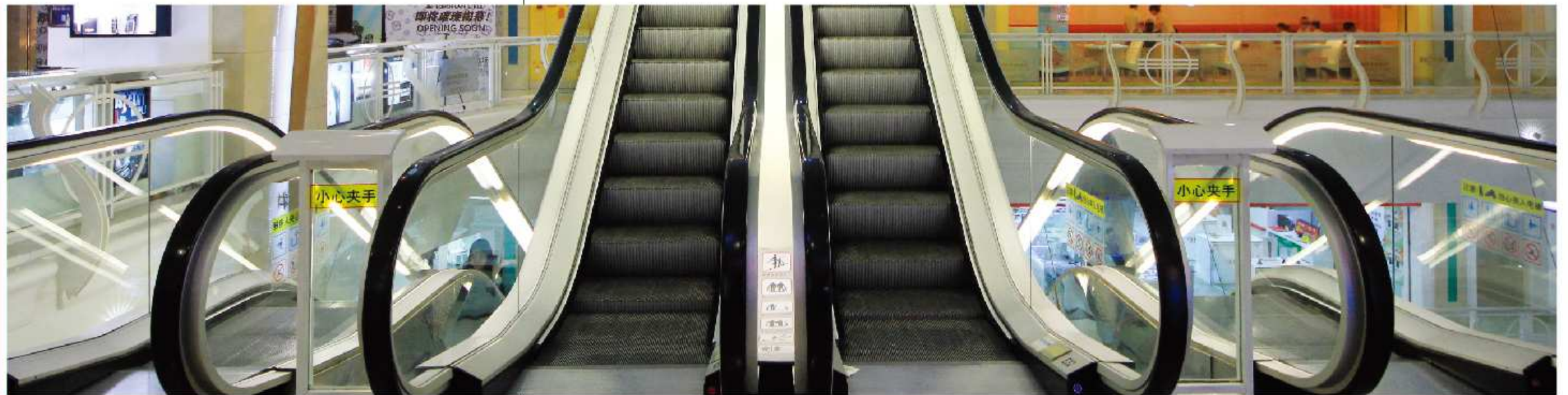
Fine safety and reliability

短踏板表面的防滑槽设计，具备良好的防滑性能，使骑行安全舒适。梳齿极小的倾斜角度，可使购物车便捷自如地进入/出入行道。专用主要内容，安全保护功能齐全，运行平稳，驱动效率高。

Surface anti-skid groove design of short tread has good anti-skid properties. It brings about the safe and comfortable travel. Angle of inclination with extremely small comb-teeth enables the shopping cart to freely, promptly and conveniently enter into / exit from the moving walk. It features as complete safety protection functions, smooth running, high drive efficiency.

标准功能

Standard functions



围裙板刷

Skirt panel brush

装于围裙板两侧且位于梯级（踏板）上面的围裙板刷，可避免乘客的鞋子碰撞围裙板的同时，也能安全有效地防止异物被带入梯级（踏板）内。

The skirt board brushes, mounted on both sides of the skirt boards and located above the steps, can not only avoid the passengers, shoes to collide on the skirt boards but also effectively avoid the entry of foreign objects into the steps.



扶手入口

Handrail inlet

新颖别致、富有现代时尚感的流线型扶手带出入口设计，赋予扶梯更多的灵活性和亲和力，蕴含对用户的细心体察。尽显灵活、圆润、顺畅的美感，又可彰显周围建筑的典雅与尊贵。

Novel, contemporary fashion sense streamline handrail the entrance design gives escalator more spiritual affinity, contains carefully observe users. Do now flexible, rounded, smooth beauty, but also highlight the elegance and dignity of the surrounding buildings.

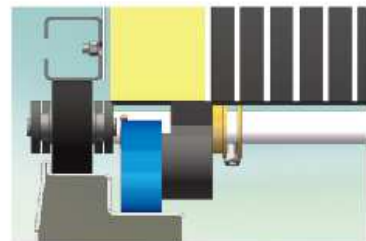


自动加油

Automatic oiling

PLC控制自动加油润滑系统，实现了在扶梯运行过程中给传动链理想的自动润滑，不仅减轻了日常维保工作量，而且可以延长传动机构的使用寿命。

PLC control automatic lubrication system, to achieve the escalator running to the drive chain ideal automatic lubrication, not only to reduce the workload, and routine maintenance can extend the life of the transmission mechanism.



高精度梯路侧导向导轨系统

High precision ladder rail side guide rail system

导轨系统采用大截面带肩导轨，实现梯级的高精度横向定位，可以有效的保证梯级与裙板间保持最小的间隙，降低了裙板与梯级间隙异物夹入的危险。

The rail system uses a large cross-section with shoulder rails, steps high precision lateral positioning, can guarantee to maintain a minimum clearance between the steps and apron, lower skirt with cascade gap any object into the dangerous.



驱动链断裂保护

Driver protection strand breaks

当驱动链过度拉伸断裂时，扶梯自动停止保护安全。

When the drive chain excessive tensile fracture, the escalator stops automatically to protect the safety.



故障显示器

Fault display

当有故障发生时，故障代码就会显示在故障屏幕上，确保在最短的时间内有效、准确的判断故障部位，大大提高了维修保养效率。

When some defect takes place, the trouble code will be displayed in the defect screen, it ensures the effective and accurate trouble position within the shortest time possible. In this way, it greatly enhances the repair and maintenance efficiency.

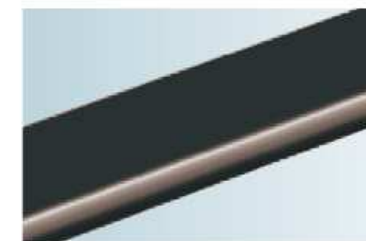


扶手带测速

Handrail speed

当扶手带运行速度与梯级运行速度比例超过系统设定值时，扶梯停止运行。

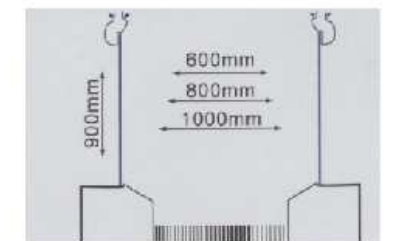
When handrail running speed and running speed ratio exceeds cascade system settings, escalators stopped running.



扶手带颜色 Handrail color
黑（标准） Black (standard)

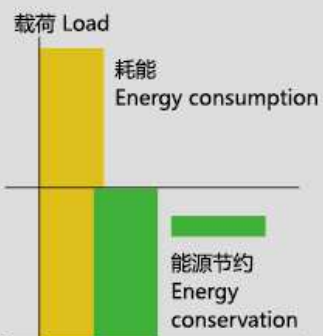


护壁板颜色 The glass balustrade color
无色透明（标准）
Colorless and transparent (standard)



护壁板高度 Balustrade height
(1000mm为标准规格)
(1000mm is standart specification)

选配功能 Optional functions



变频驱动 Variable Frequency Drive

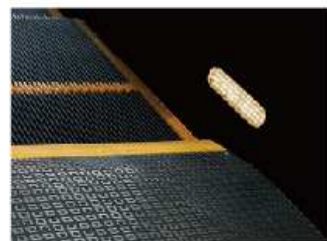
空载情况下，扶梯(人行道)以低速运行，当检测到有乘客接近时既恢复正常速度运行，节能效果明显，多达40%。
Under no-load conditions escalators (sidewalk) running at low speed, when there is only detected when the passengers return to normal speeds close to significant energys avings, up to 40%.

自动启停功能 Automatic start and stop function

当检测到乘客时扶梯启动，乘客离开后，扶梯自动停止，有效节能。
When detecting a passenger escalator start after the passengers to leave the escalator stops automatically, effectively saving.

旁路变频启动 Bypass frequency start

当变频器发生故障时，自动扶梯切换运行模式，保证扶梯正常运行。
When the inverter fails, escalators switch operation mode to ensure the normal operation of the escalator.



梳齿照明 Comb lighting

照明被安装在靠近梳齿板旁的围裙板上，为梯级和梳齿板提供照明以方便乘客安全的乘坐。

The illumination has been installed in the skirt panel near the comb plate. It offers the lighting for the step and the comb plate. It is more convenient for the passengers to up and down.



裙板照明 Skirt-board Lighting

两侧LED照明灯，对晚间的梯级运行有清晰的效果。
Two sides LED lighting lamp, with the clear effect on the evening of step running.



运行方向指示 Running direction indication

运行方向和禁止显示标识置于扶手带出入口处，以显而易见的运行或禁止指示，确保乘客安全自如地乘坐。

The running direction and forbidden display mark have been placed in the intel and outlet of the handrail. The obvious running or forbidden instruction ensures the safe riding of the passengers with great ease.



加热装置 Heating device

上部安装在上机房主机边，主要对上部机房进行加热，中部安装在扶梯中部，下部安装在下机房，主要对整个梯路进行加热。

Each escalator usually installs three heating devices. One is beside the host in the upper machine room. It mainly heats the host. The second is installed in the mid escalator. And the third is in the lower part. It mainly heats the whole escalator.



语音人机界面系统 Voice HMI system

装于出入口处当有乘客乘坐时，语音提示乘坐注意事项。
When installed in the entrance for passengers, the voice prompts to take precautions.

扶手带颜色 (选配) Handrail color (optional)



蓝
Blue



浅绿蓝
Shallow bluish green



浅褐色
Light brown



灰
Gray

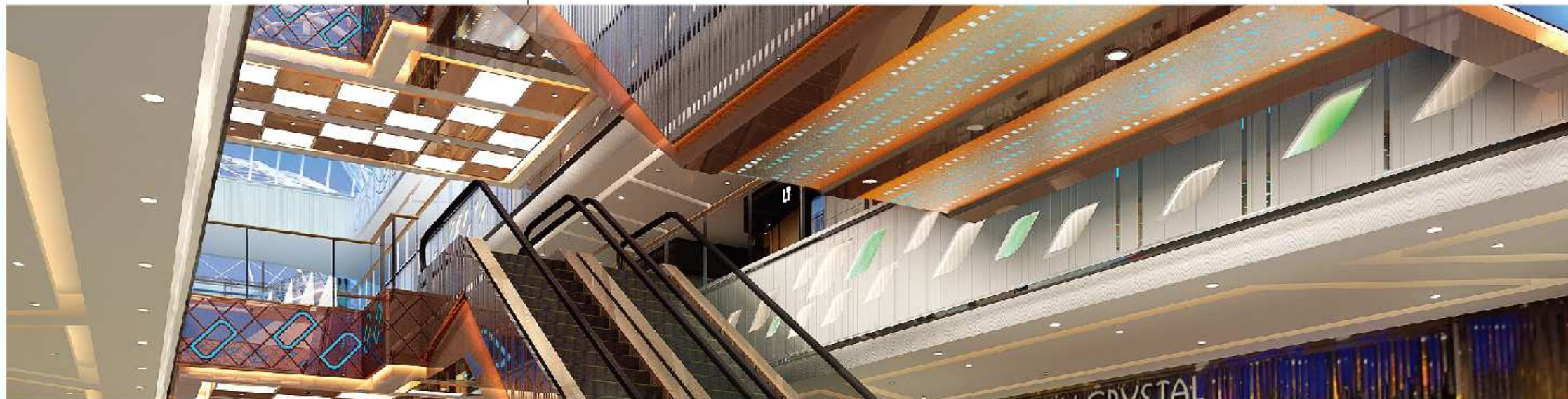


红
Red



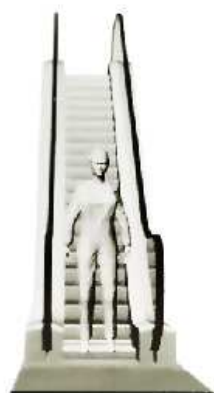
橙
Orange

布置方案 Arrangement

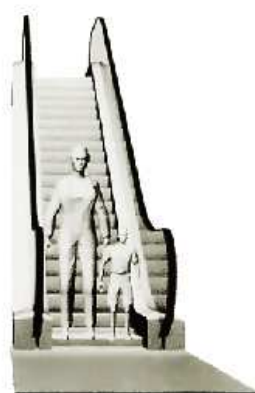


布置方案，合理的布置、科学的规划

Layout plan, reasonable arrangement, scientific planning



梯级宽度 600mm
Step width 600mm



梯级宽度 800mm
Step width 800mm



梯级宽度 1000mm
Step width 1000mm



单排列
Single arrangement



连续排列
Continuous arrangement



平行连续排列
Paralleled & continuous arrangements



十字交叉排列
Cross & continuous arrangements

单排列 Single arrangement

这种布置方式占地面积小，扶梯放置位置灵活。它只能实现客流的单向断续流动。多用于小型商场和卖场。

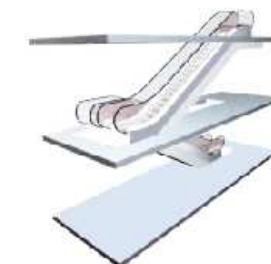
Such arrangement covers small space with flexible escalator position. It can only fulfill one-way intermittent passenger flow. It is most applicable for small shopping center and supermarket.



连续排列 Continuous arrangement

这种布置方式比断续布置所需要的空间大一些，它能实现客流的单向连续流动，多适用于中、小型百货商场。

Such arrangement is bigger than space required by intermittent arrangement. It can fulfill one-way continuous passenger flow. It is most applicable for medium and small department store and shopping center.



平行连续排列 Paralleled & continuous arrangements

这种布置方式主要适用于客流量较大的大型商场和公共交通场所。它能实现较大客流量的双向连续流动；在客流出现单边高峰时，可以按照客流需要调整部分扶梯的运行方向以满足高峰流量。因为无需内侧挡板，这种方式具有一定的经济性。

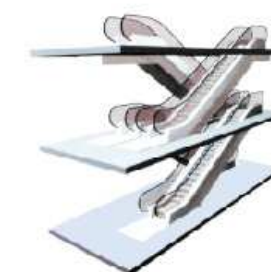
Such arrangement is mainly applicable for large shopping center and public traffic occasions with large passenger flow. It can fulfill two-way continuously large passenger flow. If passenger flow has one-way rush hours, it can adjust the running direction of partial escalator in order to meet passenger flow at rush hours. It needs no inside baffle. It is very economical.



十字交叉排列 Cross & continuous arrangements

这种布置方式主要适用于大型百货商场和公共建筑，这些地方的楼层之间的运送次数应保持尽可能地少。

Such arrangement is mainly applicable for large department store and public building. Delivery times between various floors in those places can be reduced as less as possible.



安全装置

Safety Device

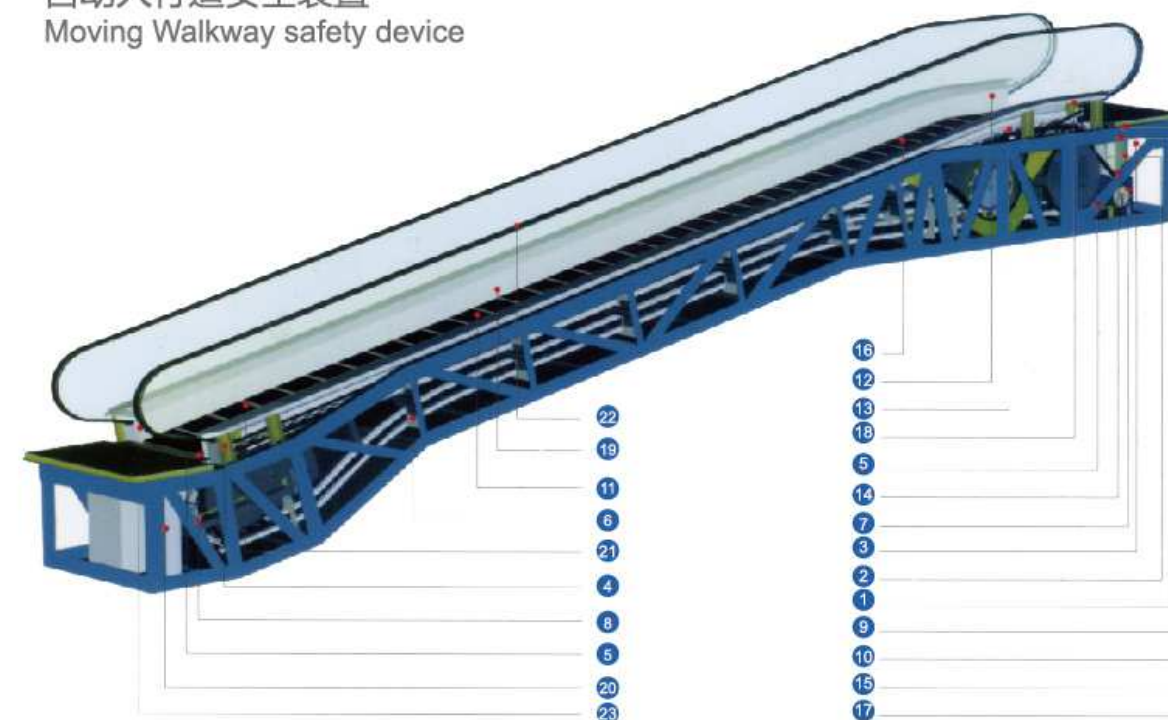
自动扶梯安全装置 Escalator safety device



标准安全装置/Standard safety device

1. 缺相、错相保护 Lack of phase, error phase protection	如查发生缺相错相, 自动扶梯(自动人行道)将自动停止。 If lack of phase or error phase has been checked out, the escalator (moving-walkway) will automatically stop the operation.
2. 马达超载保护 Motor over-load protection	电流超过额定电流的15%则扶梯自动停止运行。 when the current exceeds 15% of the current rating, the escalator will automatically stop the operation.
3. 电器回路保护 Electrical appliance loop protection	提供自动电路断开装置以保护自动扶梯(自动人行道)的电路和电源部件。 It offers the automatic circuit diaconnecting device to protect the circuit and mains compinents of the escalator(moving-walkway) .
4. 扶手带入口保护 Handrail inlet protection	当外物被夹在扶手带入口处时, 自动扶梯(自动人行道)会自动停止运行。 When some foreign substance has been clipped in the handrail inlet, the escalator(moving-walkway) will automatically stop the operation.
5. 梳齿板安全保护装置 Comb plate safety device	当外物被夹入梳齿时, 自动扶梯(自动人行道)将自动停止运行。 When some foreign subatance has been clipped in or between the combs, the escalator (moving-walkway) will automatically stop the operation.
6. 梯级塌陷保护装置 Step sagging protection device	当发现梯级有异常的弯曲时, 自动扶梯(自动人行道)会在梯级进入梳齿板前停止运行。 When there is abnormal step bending, the escalator(move-walkway) will stop the operation before the step enter into the comb plate.
7. 驱动链断裂保护 Broken drive-chain safety device	当驱动链被过度拉伸或断裂时, 自动扶梯(自动人行道)将自动停止运行。 when the rive-chain has been over-stretched or it is broken, the escalator(moving-walkway) will automatically stop the operation.
8. 梯级断裂保护 Broken step chain protection	当梯级(板)链被过度拉伸或断裂时, 自动扶梯(自动人行道)将自动停止运行。 When the step (plate) chain has been over-stretched or it is broken, the escalator(moving walkway) will automatically stop the operation.
9. 超速保护 Over-speed protection	当自动扶梯(自动人行道)超速, 将自动停止运行。 when there is over-speed to the escalator(moving walkway), it will automatically stop the operation.
10. 非操作逆转保护 Direction reversal protection	当逆转操作而违反了预定的运行方向, 自动扶梯(自动人行道)将自动停止运行。 when it comes the unintentional reversal of direction of travel, the escalator (moving walkway) will automatically stop the operation.
11. 警戒线 Security line	黄色合成树脂警戒线位于自动扶梯踏板的前部和两边边, 以防止乘客踏入相邻梯级的边缘及级和围裙板之间, 在梯级两边的警戒线高于踏板表面(自动人行道提供可选黄色喷漆警戒线)。 The yellow synthetic resin security line is located in the front position and twp sides of the escalator tread so that the passengers will not tread in-between the edge of the adjacent step and the lift group lengthened skirt panel. The security line on both sides of the step is higher than the tread surface. (The moving-walkoffers the selective yellow spray-painted security line.)
12. 紧急停止按钮 Emergency stop button	当按下该按钮时, 自动扶梯(自动人行道)将停止运行。 When the button has been pressed down, the escalator (moving-walkway) will stop the operation.

自动人行道安全装置 Moving Walkway safety device



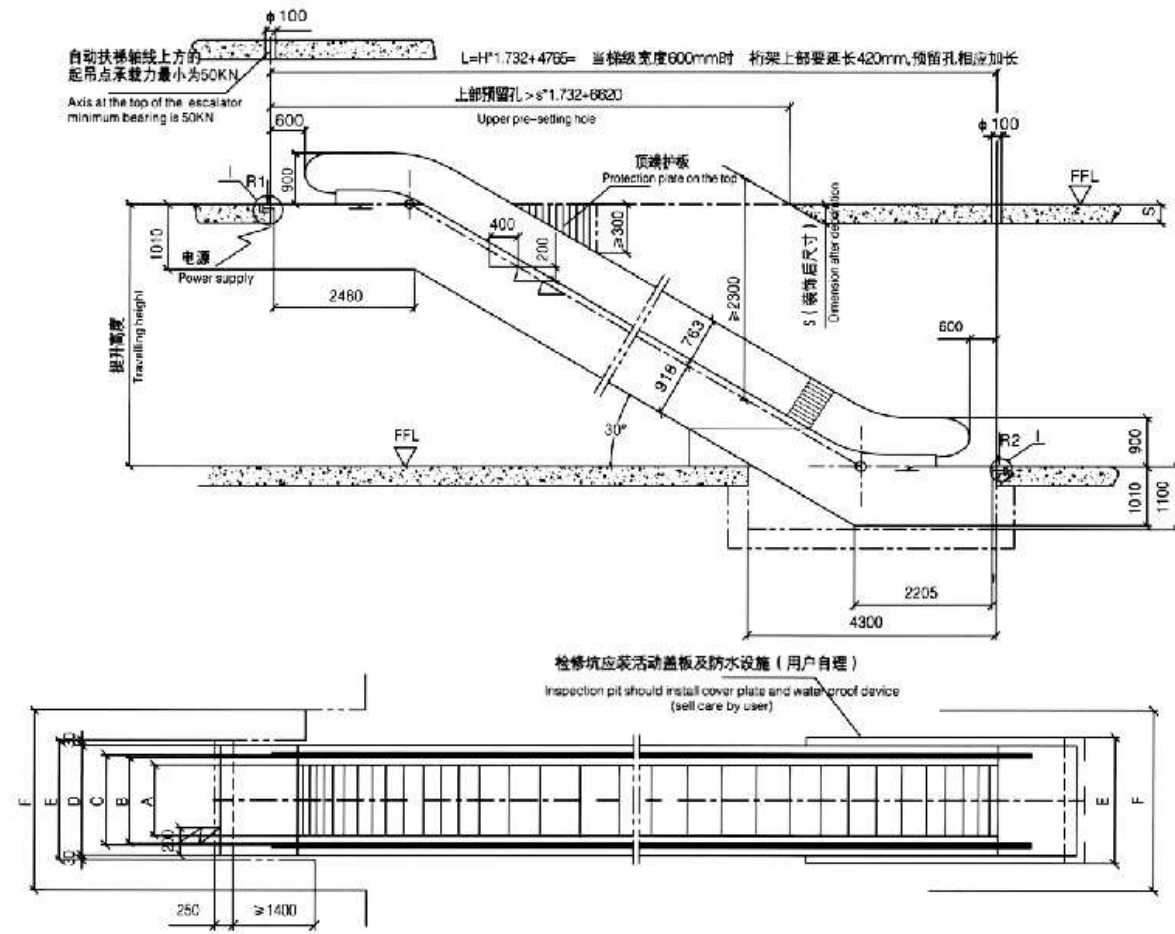
13. 围裙板保护 Skirt panel protection	当外物被夹在围裙板和梯级之间时, 动扶梯(自动人行道)将自动停止运行。 When some foreign substance has been clipped in between the panel and the step, the scalator (moving-walk) will automatically stop the operation.
14. 制动器保护 Brake protection	当电力不足或任一安全装置动作时, 制动装置将通过弹簧弹力作用使制动功能生效, 使自动扶梯(自动人行道)停止运行。 When the electric force falls short of supply or it acts any of safety device, the brake function goes into effect by the safety device through the spring resilience action, in this way, the escalator(moving-walk) stop the operation.
15. 检修安全开关 Safety inspection switch	检修保养时, 防止扶梯启动的安全装置。 It is a safety device to prevent from the escalator starting during the inspection and maintenance.
16. 梯级照明 Step illumination	扶梯上下端, 梯级下部装有照明以提醒乘梯人注意安全。 Illumination exists in the upper and lower ends of the escalator, in the lower part of the step in order to remind the passengers of the security matters.
17. 启动警铃装置 Alarm bell starting device	扶梯启动时警铃响起, 以提醒乘客安全。 The alarm bell rings when it starts the escalator in order to remind the passengers of security matters.
18. 扶手带断裂保护装置 Control device for handrail breakage	当扶手带断裂时, 自动扶梯将停止运行。 When the handrail is broken, the escalator will automatically stop the operation.
19. 围裙板刷 Skirt panel brush	在围裙板和梯级之间装有刷子使乘客的鞋子不会碰到围裙板(不仅限于自动扶梯)。 The brush that has been installed between the skirt panel and the step will prevent the passengers from touching the skirt panel, (it is not merely restricted to the escalator).

可选安全装置/Optional safety device

20. VVVF变频控制技术 VVVF variable frequency energy-saving system	选用变频器后, 能有效的低能源消耗。 When chooses the frequency converter, it can effectively reduce the energy consumption.
21. 梳齿照明 Comb illumination	照明被安装在靠近梳齿板旁的围裙板上, 为梯级和梳齿板提供照明以方便乘客安全的乘坐自动扶梯。 The illumination has been installed in the skirt panel near the comb plate. It offers the lighting for the step and the comb plate. It is more convenient for the passengers to up and down the escalator.
22. 扶手照明 Handrail illumination	扶手照明安装在扶手支架内, 柔和的光线为运行中的自动扶梯增添了几份灵气。 The handrail illumination has been installed in the handrail frame. The gentle light adds charm to the running escalator.
23. 自动启动/停止 Automatic start / stop	位于楼层板附近的红外线传感器可以检测到进入楼层板的乘客。并自动开始运行, 当所以乘客开后会自动停止运行, 以节约能耗, 有扫描传感器和传统的导向杆方式可供选择。 The infrared ray sensor which is near the floor plate can detect the passenger that enter into the floor plate. Then it will automatically start the operation. After all the passengers leave, it will automatically stop the operation again in order to save the energy loss. Scanning sensor and traditional guide rod are available for your choice.

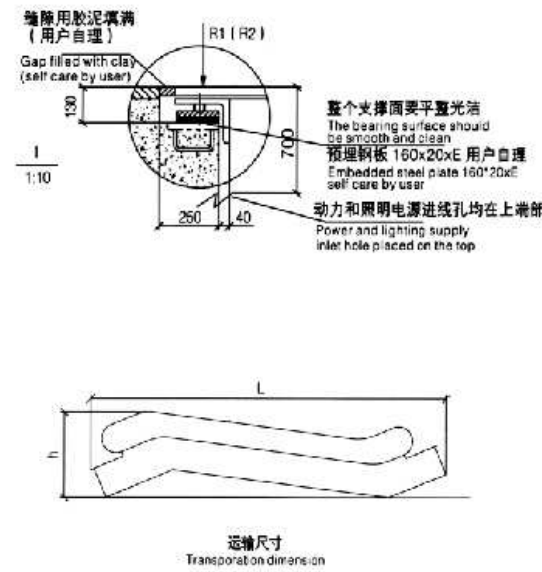
Shaft Layout

30° 自动扶梯



梯级宽度 (mm) Step width	A	B	C	D	E	F
1000	1000	1158	1238	1540	1600	2310
800	800	958	1038	1340	1400	2110
600	600	758	838	1140	1200	1910
型号 Model	提升高度 (mm) Traveling height	净重 Net weight KN	支持力 Supporting R1 KN R2 KN	电机功率 Motor capacity	运输尺寸 Transport size H L	
扶梯 30/600 (3600人/h) 速度: 0.5m/s speed: 0.5m/s	3000	57	46 41	5.5	2750	10900
	3500	60	49 44	5.5	2780	11890
	4000	64	52 47	5.5	2810	12880
	4500	68	56 50	8	2830	13870
	5000	71	59 53	8	2840	14860
扶梯 30/800 (4800人/h) 速度: 0.5m/s speed: 0.5m/s	5500	75	62 56	11	2860	15860
	6000	79	65 59	11	2870	16860
	3000	59	52 47	5.5	2750	10900
	3500	63	56 50	5.5	2780	11890
	4000	67	60 54	5.5	2810	12880
扶梯 30 / 1000 (6000人/h) 速度: 0.5m/s speed: 0.5m/s	4500	71	64 57	8	2830	13870
	5000	74	68 60	8	2840	14860
	5500	82	74 66	11	2860	15860
	6000	86	78 69	11	2870	16860
	3000	63	59 53	5.5	2750	10900

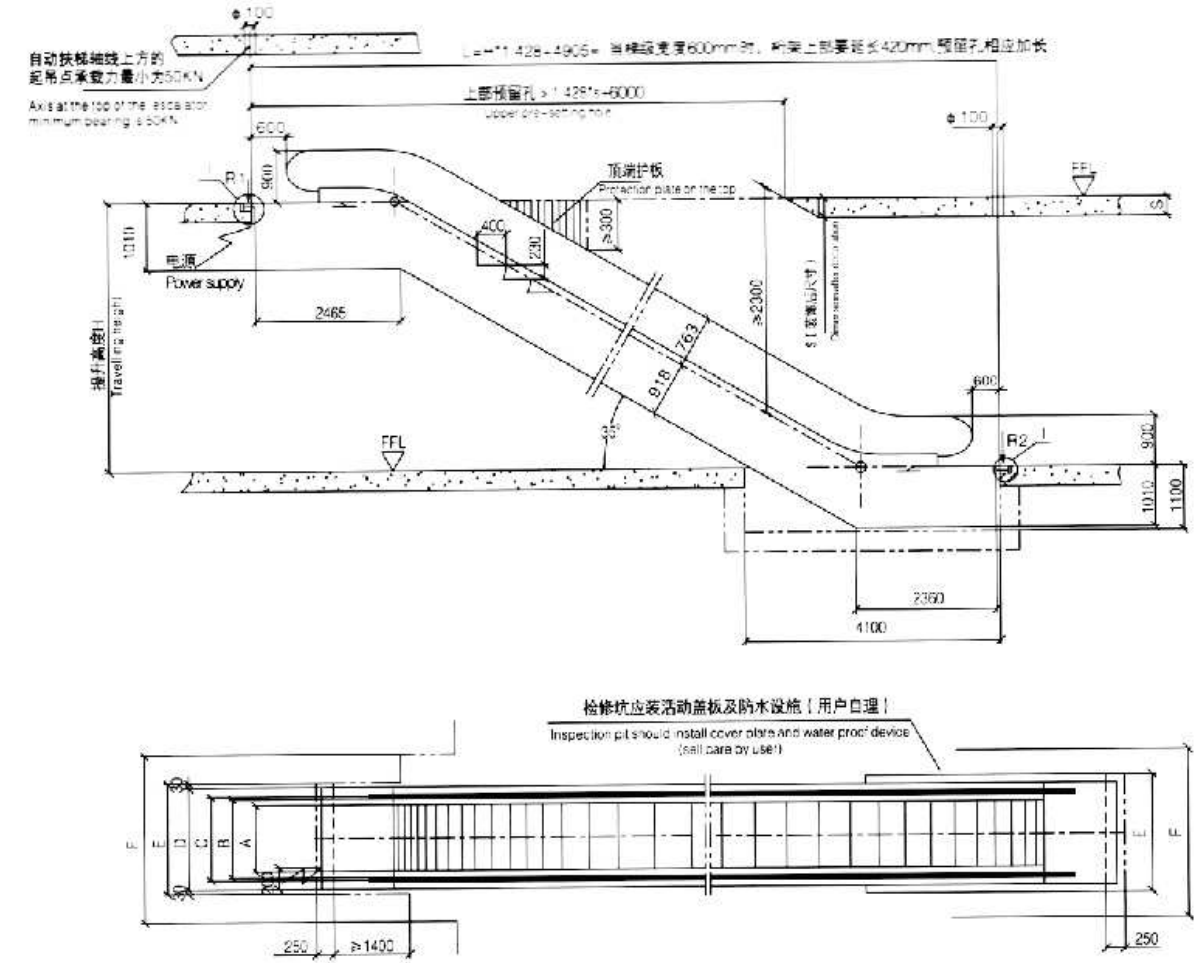
注:上述尺寸供设计参考,具体尺寸以合同约定时提供的土建图为准。
Note: only for referent, final manufacture please follow contract.



运输尺寸
Transportation dimension

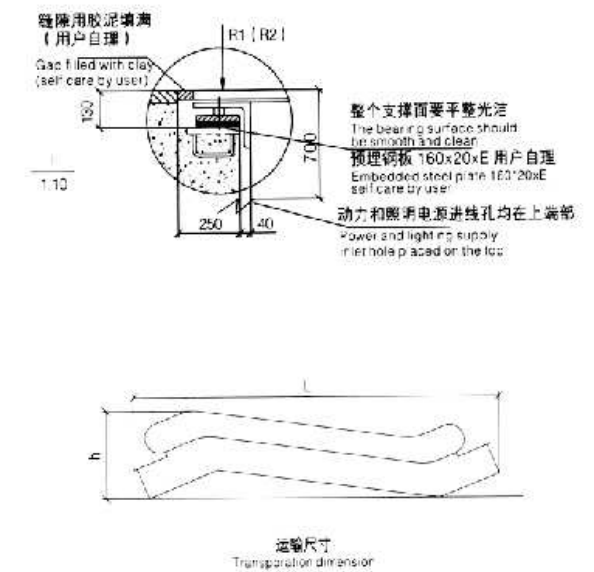
Shaft Layout

35° 自动扶梯



梯级宽度 (mm) Step width	A	B	C	D	E	F
1000	1000	1158	1238	1540	1600	2310
800	800	958	1038	1340	1400	2110
600	600	758	838	1140	1200	1910
型号 Model	提升高度 (mm) Traveling height	净重 Net weight KN	支持力 Supporting R1 KN R2 KN	电机功率 Motor capacity	运输尺寸 Transport size H L	
扶梯 35/600 (3600人/h) 速度: 0.5m/s speed: 0.5m/s	3000	54	43 39	5.5	2850	10180
	3500	57	46 41	5.5	2890	11030
	4000	60	49 44	5.5	2920	11890
	4500	64	52 46	8	2940	12750
	5000	67	54 49	8	2970	13610
扶梯 35/800 (4800人/h) 速度: 0.5m/s speed: 0.5m/s	5500	70	57 51	11	2980	14470
	6000	73	60 54	11	3000	15330
	3000	56	49 44	5.5	2850	10180
	3500	60	52 47	5.5	2890	11030
	4000	63	56 50	5.5	2920	11890
扶梯 35 / 1000 (6000人/h) 速度: 0.5m/s speed: 0.5m/s	4500	66	59 53	8	2940	12750
	5000	70	62 56	8	2970	13610
	5500	73	65 59	11	2980	14470
	6000	76	69 61	11	3000	15330
	3000	60	56 50	5.5	2850	10180

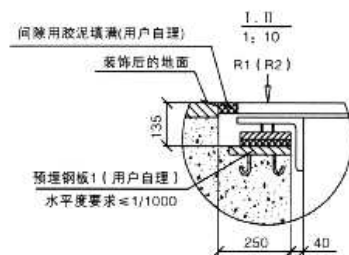
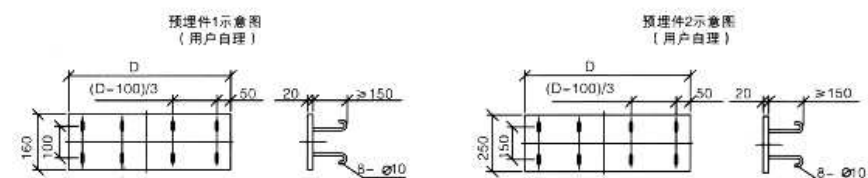
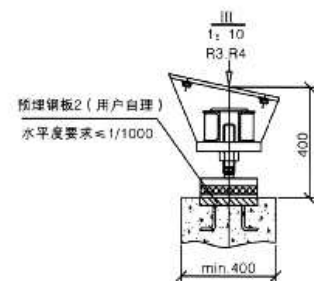
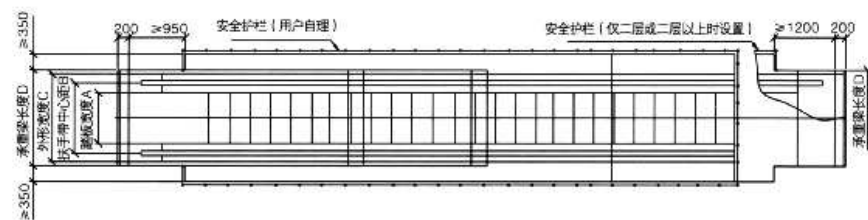
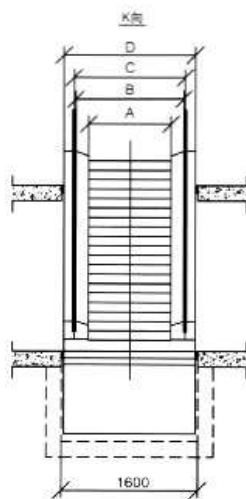
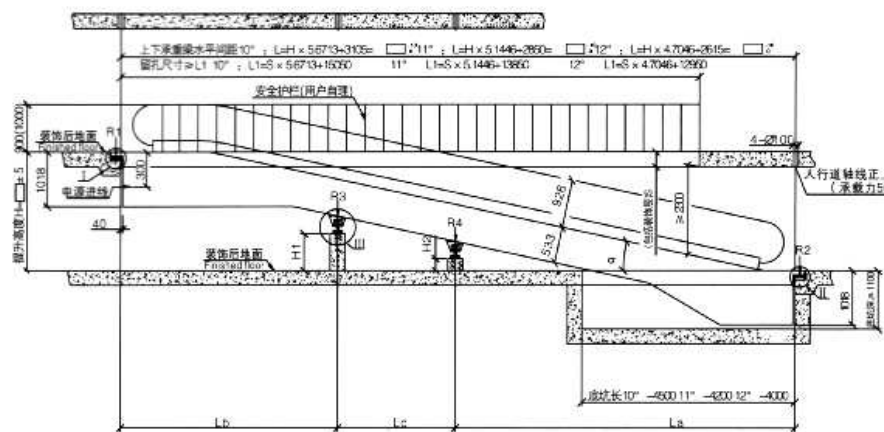
注:上述尺寸供设计参考,具体尺寸以合同约定时提供的土建图为准。
Note: only for referent, final manufacture please follow contract.



运输尺寸
Transportation dimension

Shaft Layout

10°、11°、12° 自动人行道



提升高度H	2800	4000	5400	6500					
电机功率	1000	8kw	11kw	15kw					
功率	800	5.5kw	8kw	11kw					
倾角α	10°		11°		12°				
支反力 KN	踏板宽度	1000	800	1000	800	1000	800		
	R1	0.005×Lb+11	0.004×Lb+9.5	0.005×Lb+11	0.004×Lb+9.5	0.005×Lb+11	0.004×Lb+9.5		
	R2	0.005×La+5	0.004×La+4.5	0.005×La+5	0.004×La+4.5	0.005×La+5	0.004×La+4.5		
	R3	0.006×(Lb+Lc)	0.0052×(Lb+Lc)	0.006×(Lb+Lc)	0.0052×(Lb+Lc)	0.006×(Lb+Lc)	0.0052×(Lb+Lc)		
R4	0.006×(La+Lc)	0.0052×(La+Lc)	0.006×(La+Lc)	0.0052×(La+Lc)	0.006×(La+Lc)	0.0052×(La+Lc)			
中间支撑高 (mm)	提升高度H	高度H1	高度H2	提升高度H	高度H1	高度H2	提升高度H	高度H1	高度H2
	2000-6000	H1, L1 ≥ 0.1763+620	H1, L1 ≥ 0.1763	2000-6000	H1, L1 ≥ 0.1944+577	H1, L1 ≥ 0.1944	2000-6000	H1, L1 ≥ 0.2126+600	H1, L1 ≥ 0.2126

备注: 仅有1个中间支撑时, 请按高度H1栏内公式计算中间支撑高度, La, Lb, Lc都不能超过15m.

技术说明	
倾角°	10° / 11° / 12°
速度V	0.5m/s
踏板类型	
踏板宽度A	1000 800
扶手带中心距B	1238 1038
外形宽度C	1540 1340
承重梁长度D	≥1600 ≥1400
动力电源	用户提供380V AC50Hz三相五线电源, 人行道启动时, 电压降≤10%, 正常情况下, 人行道运行时电压降≤5%; 最大启动电源应小于额定电流的3.5倍。

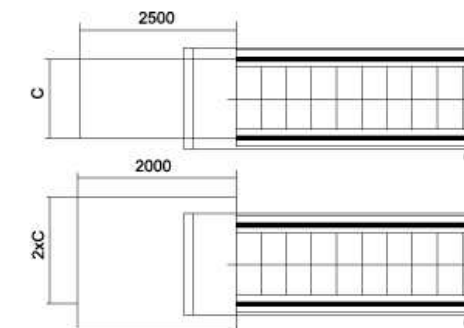
Points For

Attention in the construction and installation

土建安装须知

除了确保合同土建的各尺寸和要求, 以下的要求也应达到。
Besides complying with the drawing of the contract, attention should also be drawn to the following.

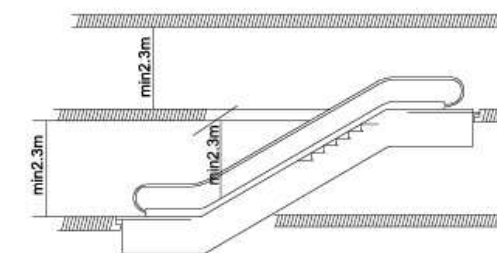
- 为了确保扶梯和人行道的使用安全, 自由空间必须在各层站处提供足够大的空间。(参见右最小尺寸图)
To ensure the safety of the escalator and moving walk, free space should be large enough in the landing area. (See the minimum size right).
- C=扶手带中心宽度。
C= the distance of the handrails.



顶空安全距离

Vertical safety distance

- 在梯阶/踏板上的任意点上, 至少有2.3米不受任何障碍的安全距离。
There should be at least 2.3m upside safety distance staring upward from the step board.
- 特别注意! 如果一台扶梯上的另一台扶梯的提升高度 < 3.3米, 就不可能达到2.3米的顶空安全距离。
Notice: if the vertical rise of one escalator, which is installed above another one, is less than 3.3m, the upside safety distance can not reach 2.3m.



扶梯(人行道)安装必须保证的水平安全距离

Escalators and moving walk horizontal safety distance

- 扶手带外边缘至墙体或其他障碍物的水平安全距离必须大于80mm。
The horizontal distance between the handrail edge and the wall or other objects should be more than 80mm.
- 梯级/踏板区上方垂直安全距离必须大于2.3m。
The vertical distance above the step board should be more than 2.3m.
- 扶手带区上方垂直安全距离必须大于2.1m。
The vertical distance above the handrail space should be more than 2.1m.
- 对楼面开孔或扶梯/人行道交叉布置, 扶手带中心到障碍物的水平安全距离必须大于0.5m。
In case of floor spaces or the cross layout of escalators and moving walk, the safety distance between the handrail center and the object should be more than 0.5m.
- 如未达到要求, 需设置专门的防护装置和防撞挡板。
If the above-mentioned requirements cannot be met, a special protection device and a bumper rail should be used.
- 专门的防护装置和防撞挡板, 可向格尔森电梯公司咨询。
For further information, please contact GERSON elevator.

